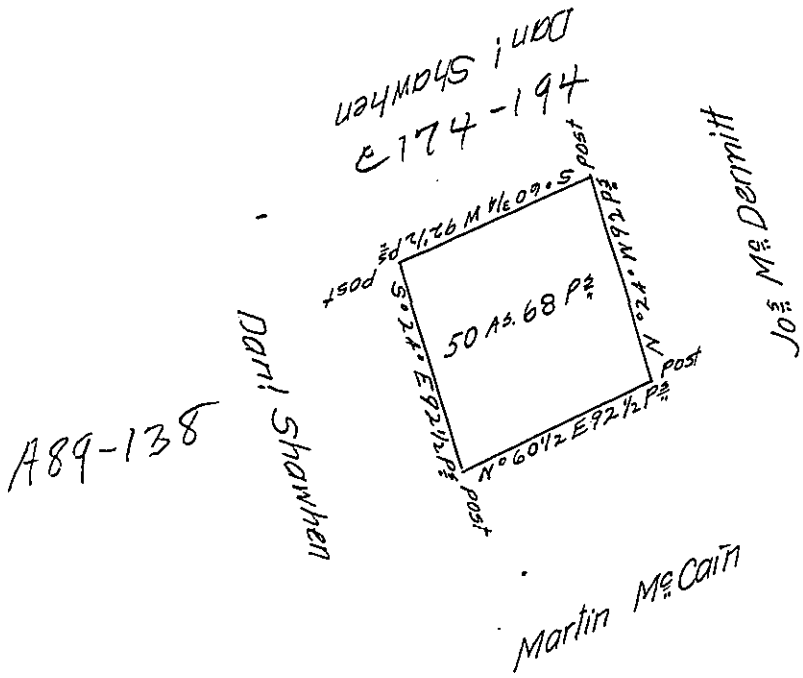


X
45
P-14-312
2-156



A Draught of a Survey called "Shawhen Square" situate on the Waters of Saw Mill Run in Washington County contain^g 50 A^c 68 P^c and the usual Allow^{ce} for Roads & Co executed the 18th of March 1788 in Pursuance of a Warrant granted to Robert Shawhen for 50 A^c dated August 26th 1785.

In^o Lukens Esq^c S. Genl

Presley Nevill }
Matt^c Fitchie } D.S.^c

IN TESTIMONY that the above is a copy of the original remaining on file in the Department of Internal Affairs of Pennsylvania, made conformably to an Act of Assembly approved the 16th day of February, 1833, I have hereunto set my Hand and caused the Seal of said Department to be affixed at Harrisburg, this sixth day of December 1906

Geo. D. Snow
Secretary of Internal Affairs.